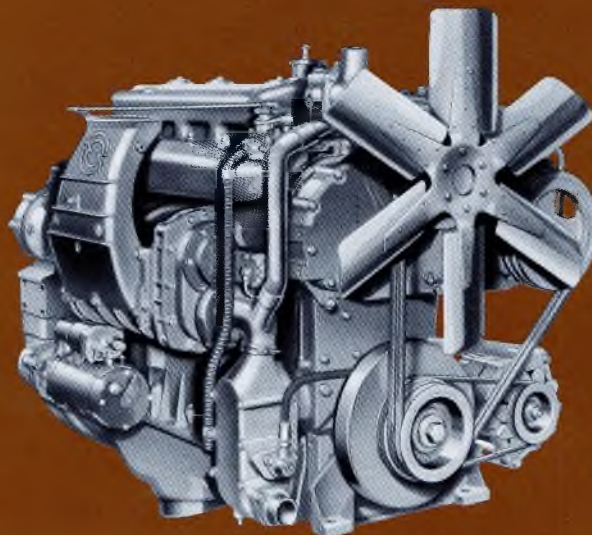


Detroit Diesel Engines

Industrial Models

4-71
155 hp

6-71
230 hp



Typical 6-71
Industrial Model

specifications

Basic Engine	4-71 N65 Injectors	6-71 N65 Injectors
Model	1043-5000, 1043-7000	1063-5000, 1063-7000
Description	Naturally Aspirated	Naturally Aspirated
Number of Cylinders	4	6
Bore and Stroke	4.25 in × 5 in (108 mm × 127 mm)	4.25 in × 5 in (108 mm × 127 mm)
Displacement	284 cu in (4.66 liters)	426 cu in (6.99 liters)
Rated Gross Power: SAE: 77 °F (25 °C) and 29.31 in Hg (99 kPa) Barometer (Dry)	155 BHP (116 kW) @ 2100 RPM	230 BHP (172 kW) @ 2100 RPM
Continuous Gross Power: SAE: 77 °F (25 °C) and 29.31 in Hg (99 kPa) Barometer (Dry)	121 BHP (90 kW) @ 1800 RPM	180 BHP (134 kW) @ 1800 RPM
Torque: SAE: 77 °F (25 °C) and 29.31 in Hg (99 kPa) Barometer (Dry)	407 lb ft (552 N•m) @ 1600 RPM	609 lb ft (826 N•m) @ 1600 RPM
Compression Ratio	18.7 to 1	18.7 to 1
Approximate Dimensions:		
Length	42 in (1067 mm)	54 in (1372 mm)
Width	29 in (737 mm)	29 in (737 mm)
Height	42 in (1067 mm)	39 in (991 mm)
Net Weight (Dry)	1780 lbs (807 kg)	2190 lbs (933 kg)

For complete dimensional information, refer to installation drawing 2SA78 for Model 1043-5000, 2SA74 for Model 1043-7000, 2SA72 for Model 1063-5000 and 2SA71 for Model 1063-7000.



performance

Rating Explanation

RATED BHP is the power rating for variable speed and load applications where full power is required intermittently.

CONTINUOUS BHP is the power rating for applications operating under a constant load and speed for long periods of time.

FUEL CONSUMPTION CURVE shows fuel used in pounds per brake horsepower hour.

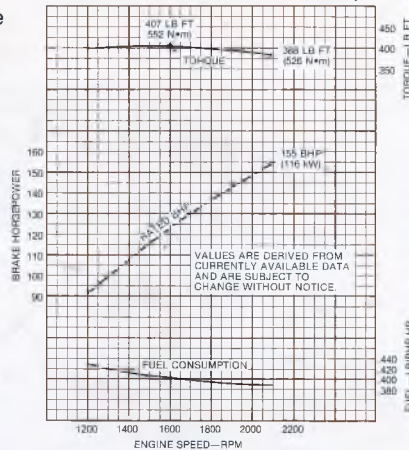
POWER OUTPUT guaranteed within 5% at standard ambient conditions.

THIS RATING does not include power requirements for accessory and standard equipment.

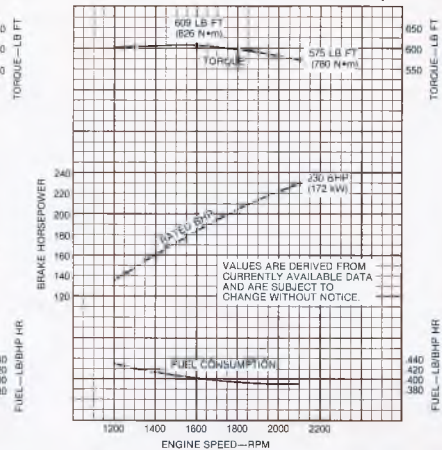
For complete engine specifications for your particular requirements, see your distributor or authorized Detroit Diesel Allison representative.

†Rating conditions of SAE: 77°F (25°C) and 29.31 in Hg (99 kPa) Barometer (Dry)

**BASIC ENGINE PERFORMANCE
MODEL 4-71 WITH N65 INJECTORS†**



**BASIC ENGINE PERFORMANCE
MODEL 6-71 WITH N65 INJECTORS†**



standard equipment

Air Inlet Housing

Alternator—12 volt, 42 amp

Crankshaft Pulley

Engine Mounts

Exhaust Manifold

Fan—18 in, 6 blades, suction type, 4-71 only;
22 in, 6 blades, suction type, 6-71 only

Flywheel—SAE #1

Flywheel Housing—SAE #1

Fuel Filters—Spin on

Governor—Variable speed, with throttle controls

Injectors—Cam operated, unit type, clean tip

Instruments—Ammeter, oil pressure and water temperature gauges, and starter switch

Lube Oil Cooler

Lube Oil Filters—Full flow

Oil Pan—Cast iron pan for 16° inclination angle, 4-71 only; stamped steel pan for 20° inclination angle, 6-71

Starting Motor—12 volt

Vibration Damper—Single, heavy, viscous

For a complete listing of standard and optional equipment, consult your authorized Detroit Diesel Allison representative.

WORLDWIDE REGIONAL OFFICES

Atlanta, Georgia
(404/257-3630)
Naperville, Illinois
(312/961-6750)

Dallas, Texas
(214/659-5050)

Detroit, Michigan
(313/556-5800)

Parsippany, New Jersey
(201/993-4040)

Fremont, California
(415/498-5200)

London, Ontario, Canada
(519/452-5000)

Rotterdam, The Netherlands
(31) 10-29-0000

Dandenong, Victoria, Australia
(61) 3-797-7911

Athens, Greece
(30) 1-6833-100

Coral Gables, Florida
(305/446-4900)

Jurong Town, Singapore
(65) 265-4697

Mexico City, Mexico
(905) 250-4354

Detroit Diesel Allison Division of General Motors

13400 Outer Drive, West, Detroit, Michigan 48239-4001
(313/592-5000)

OFFICES

Denver, Colorado, U.S.A.
Los Angeles, California, U.S.A.
Arlington, Virginia, U.S.A.
Antwerp, Belgium
Biel Bienne, Switzerland
Helsinki, Finland
Lisbon, Portugal

Oslo, Norway
Paris, France
Ruesselsheim, Germany
Stockholm, Sweden
Northampton, England
Johannesburg, South Africa
Nairobi, Kenya

Adelaide, Australia
Brisbane, Australia
Sydney, Australia
West Perth, Australia
Jakarta, Indonesia
Taipei, Taiwan
Tokyo, Japan
Beijing, China
Bogota, Colombia
Buenos Aires, Argentina
Lima, Peru
Santiago, Chile
Sao Paulo, Brasil