

MINE KART

Model MK-2

A COMMON PERSONNEL CARRIER FOR ALL UNDERGROUND MINES
DESIGNED SPECIFICALLY FOR MINE SUPERINTENDENTS,
SHIFT CAPTAINS, SURVEYORS AND OTHER MINE STAFF.



Summary of Benefits

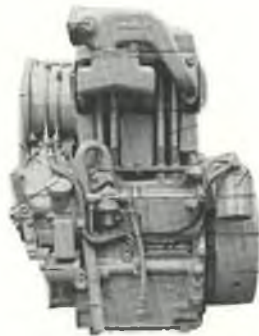
- Designed for rough tough operators.
- High availability and manoeuvrable
- Lowest maintenance and operating costs of any unit
- Rides like a Cadillac
- Gets your people to the face and back safely and quickly.
- driven by a 28 h.p. diesel when others need twice this
- to the mine operators this means:
 - Half the fuel consumption
 - Half the mine ventilation & heating costs

Designed With Hard Times In Mind

ENGINE SPECIFICATIONS

<u>ENGINE</u>	<u>DEUTZ</u>	<u>ISUZU</u>	<u>ISUZU</u>
Make and model	Deutz Diesel, F2L-511W	Isuzu Diesei QD27	Isuzu Diesel QD40
Mine Rating @ 2600 rpm	28 h.p. (20.8 kW)	@ 2800 rpm 27 h.p. (20.1 kW)	40 h.p. (29 kW)
Maximum Torque @ 2000 rpm	60ft. lbs. (81Nm)	57 ft. lbs. (77 Nm)	85 ft. lbs. (114 Nm)
Bore and Stroke	3.93 x 4.13 in. (100 x 105 mm)	3.39 x 4.02 in. (86 x 102 mm)	3.39 x 4.02 in. (86 x 102 mm)
Displacement	99 cu. in. (1.625 liters)	72.3 cu. in. (1184 cc)	108 cu. in. (1777 cc)
Number of Cylinders	2	2	3
Cooling	Air	Water	Water
Electrical	12 Volt	12 Volt	12 Volt
Air Cleaner	Oil Bath	Dry Type	Dry Type
Weight	342 lbs. (155 kg.)	364 lbs. (165 kg.)	478 lbs. (217 kg.)
MSHA Ventilation Rating	2500 CFM		
Approval No.	24-D-104-0		

DEUTZ



Air-cooled two cylinder diesel engine F2L511W

Deutz air cooled diesel — 4 cycle, pre combustion chambers. Oil bath air cleaner, overhead valve with Deutz fuel injection cold start glow plugs, fuel filters, oil filter, oil cooler, 12 volt starting. Deutz is sold by their world wide distribution network. Warranty is six months or 2000 hrs. 100% on parts and labour.

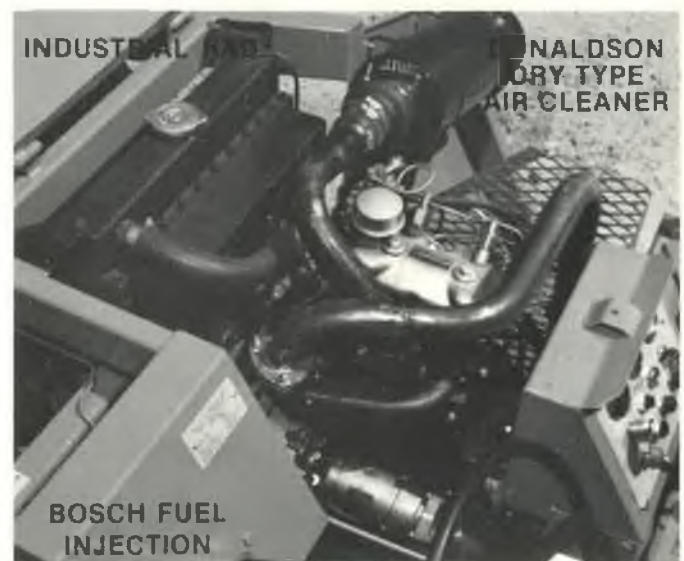


ISUZU QD27 & QD40



Isuzu automotive diesels are 4 cycle, water cooled, overhead valve engines. They feature Bosch type fuel injection, cold start glow plugs, mechanical governors, pre combustion chambers, Donaldson dry type air cleaner, fuel filters, fuel flow oil filters, and 12 volt electric start.

Isuzu in Canada is sold and serviced by the General Motors Distribution Network. Warranty is 12 months or 1800 hours 100% on parts and labour.



GENERAL SPECIFICATIONS

TRANSMISSION & CLUTCH

H-Shift Pattern Constant Mesh
3 Speeds Forward and 1 Reverse
with built in 3:1 gear drop box
Heavy Duty Industrial Type 9" (228 mm) dia clutch

AXLES

Rear Spiral Bevel Dana 3/4 Ton Truck

WHEEL & TIRES

One piece rim, low pressure tires, truck type with tubes
Tire size, Front and Rear 31 x 11.5-15 — 4-ply
Tire Pressure 10 psi (0.7 bar)

BRAKES

Service: Hydraulic disc on front wheel and rear axle pinion — Separate systems front and rear.
Emergency/Parking. Manually applied drive line disc brake. Operator lever applied.

STEERING

Manual Worm Gear Box or optional industrial orbitrol power steering with hydraulic power take off for up to 2000 psi (130 bars)
Turning angle — 45° in each direction for a total of 90°
Pressure setting at 500 psi (35 bars)

TANK CAPACITY

Diesel Fuel 7 U.S. Gal. (26 litres)
Hydraulic Oil 3 U.S. Gal. (10 litres)

SEATING

Driver's and front passenger seat both with suspension, fully padded water proof, with adjustable seat track on driver's seat.

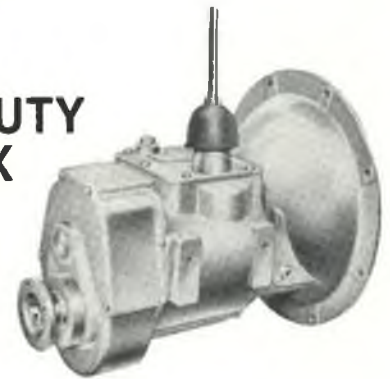
ELECTRICAL SYSTEM

12 Volt starting with 62 amp alternator
Two driving lights with two backup lamps.
Hourmeter, Voltmeter, Engine Temp., Main Disconnect Switch, Glo Plugs.
Low oil pressure, high engine temp. warning system. (buzzer and red light)

FRAME

Heavy duty steel tube with metal covers.
Three tires eliminate suspension systems.
All checker plate flooring.
Anti skid rear bumper steps.

HEAVY DUTY GEARBOX



STANDARD EQUIPMENT

Hydraulic tank shut off valve for easy filter changes.
Electric Starting 12 Volt
Front & rear red reflectors
Fuel shut off valve
PTX or Fume Diluter Scrubber

OPTIONAL EQUIPMENT

10 lb. ABC Fire Extinguisher
Wheel Chock
Seat Belts Front Only.
Two rear fold up seat cushions with back rests
Frame widths and lengths to fit your mine shafts or cages
Various axle ratios selected for your mine ramps or your road ways
Spare tire tube & wheel assembly
Bolt on roll bar
Ford flame proof diesel
Front wheel park brake
Man basket booms and elevated platforms
Scissor lifts
4D booster starting battery and box
Fold down tail gate
Built in 12 CFM air compressor and receiver to operate small plug drill



EXPLOSIVE CARRIER WITH MANBASKET





- front wheel disc brake with dual master cylinder for service brakes
- disc brake and brake line guards protected from damage
- one light turns with the wheel to always light the way even on a full 45° power steering turn
- optional front wheel park brake



side mounted fuel tank of heavy 3/16 plate (5 mm) well protected with spill way



- independent rear axle pinion disc brake for service and emergency parking
- only two service brakes reduce components and maintenance
- 1350 Spicer drive line



new longer wheelbase unit
 battery easily accessible under seat
 rear seats with back rests



- hinged cover guards allow for easy stand up servicing
- drive line cover and rear brake covers open for easy servicing

reinforced steel belly and skid guards protect engine, transmission, drive line, disc brake and rear axle from rock damage
 main frame made from heavy rectangular tubing and plate



no maintenance required from under the machine



- soft ride Bostrum seat and seat suspension
- optional seat belts
- master disconnect switch standard

electrical system incorporates accepted underground componentry with easily removable dash panel



3 speed transmission allows for max 15 mph (24 kph) speed with one reverse
 optional speeds on request

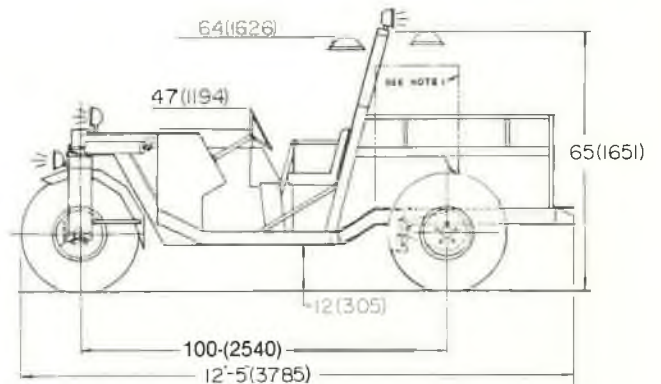
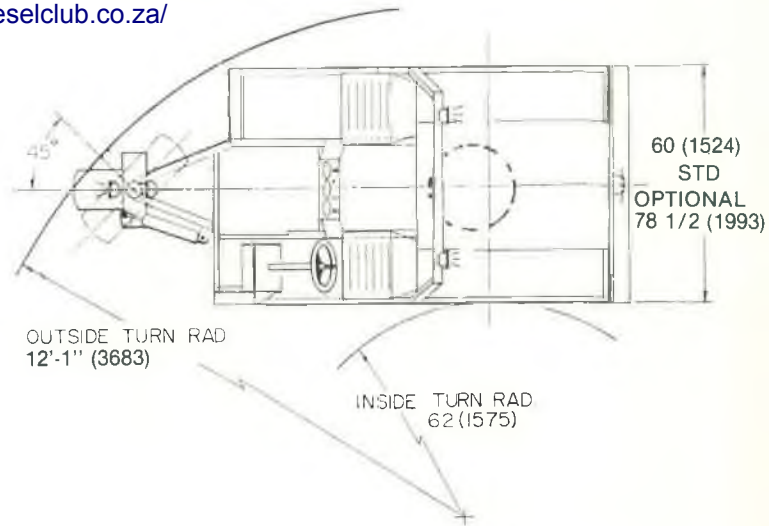
DIMENSIONS

DIMENSIONS

- Length 12'-5" (3785 mm)
- Width 60" (1524 mm)
- Wheel base 100" (2540 mm)
- Tread rear 46" (1168 mm)
- Overall height (less ROPS) . . 44" (1118 mm)
- Overall height (c/w ROPS) . . 65" (1651 mm)
- Empty weight 2700 lbs. (1727 kg)

PERFORMANCE (WITH 28HP DIESELS)

- Payload 6 men or 1200 lbs. (545 kg)
- Speed level max 15 mph (24 kph)
- Gradability (4 men) 20% grade
7.5 mph (12 kph)
- (6 men) 15% grade 7.5 mph (12 kph)



DIMENSIONS IN BRACKETS IN (mm)
NOTE 1 - REPRESENTS 45 GALLON BARREL (170 LITRES)



NEW WHEELBASE UNIT, SIDE FUEL TANK



4 OF 5 UNITS AT ONE MINE

We reserve the right to change specifications without notice.



MILLER TECHNOLOGY INC.

Mailing
Site 9 - Comp. 11 — R.R. 3
North Bay, Ontario
P1B 8G4
Office (705) 476-4500

Shipping
1839 Seymour St.
North Bay, Ontario
P1B 8G4
Parts (705) 476-4405

